

ELECTROVENT

Consider It Done

Gauteng: 010 271 3885

Western Cape: 021 703 8755

Email: sales@electrovent.co.za

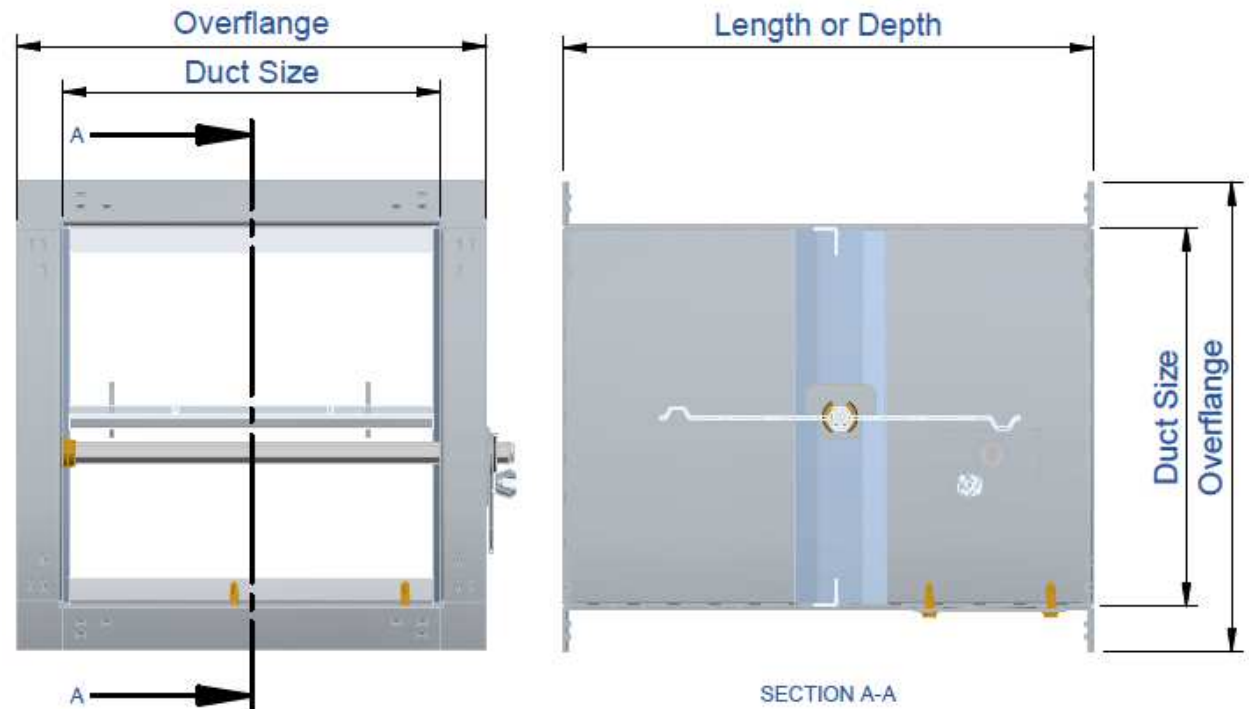
Web: www.electrovent.co.za



Don't Play With Fire

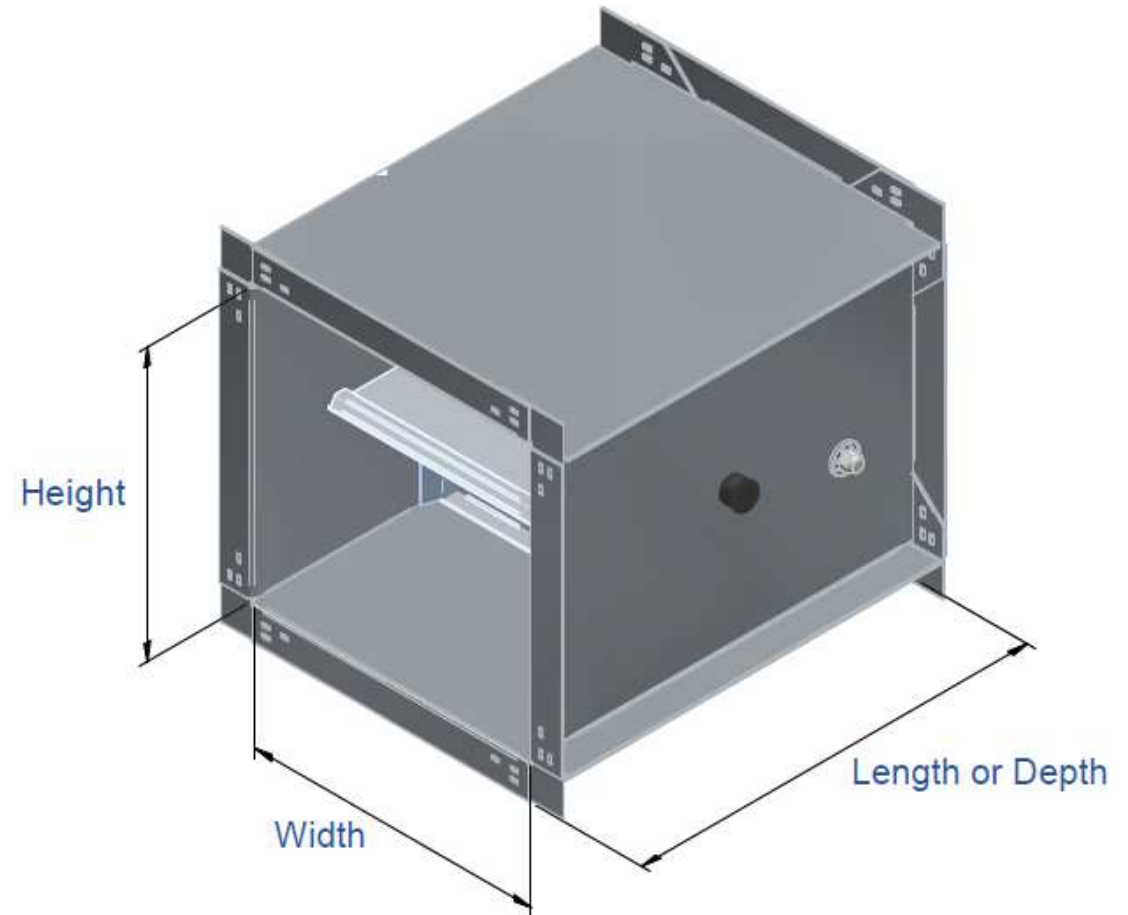
Size Specification of Dampers Duct Size vs Overflange Size

- Duct Size excludes flange dimension
- Overflange Size includes flange dimension



Size Specification of Dampers W x H x L

- Always specified in millimetres
- Width x Height x Length or Depth



Blade Type Square Fire Damper (2hr Rated) Type EFD

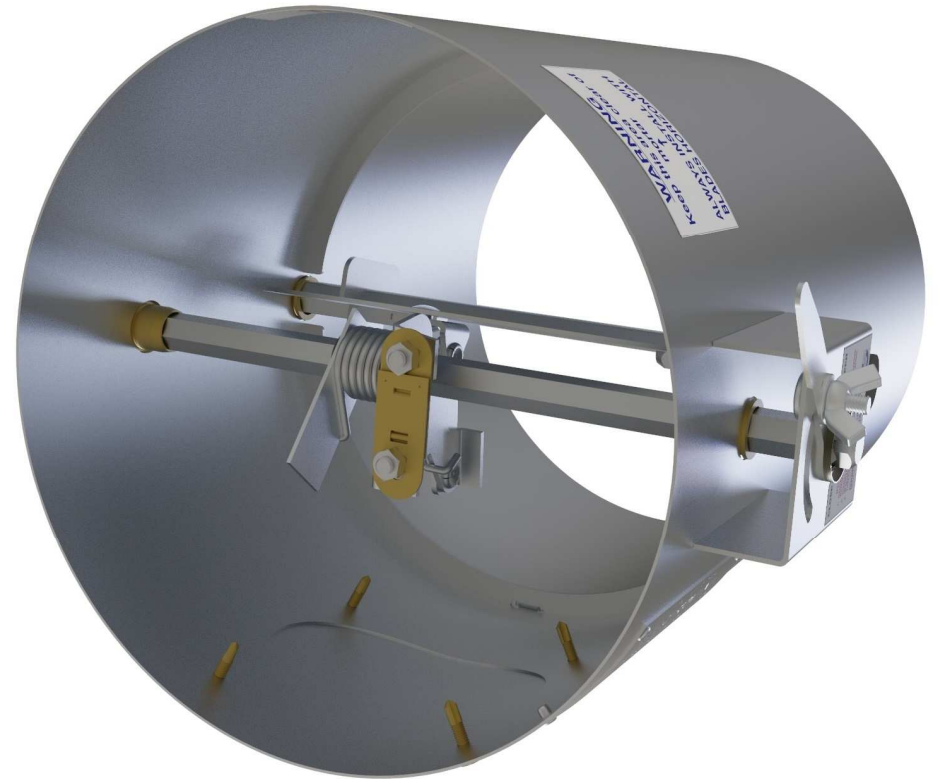
- Manually or Electrically Operated
- Certified to SANS 193:2013
- 72°C Fusible Link Failsafe
- Minimum Size 100mm x 100mm
- Maximum Size 1200mm x 1200mm
- Depth vary from 350mm to 600mm
- Extended Shaft Option
- 30mm Flanges
- Horizontal or Vertical Installation
- Inspection Port for Fusible Link

ELECTROVENT
Consider It Done



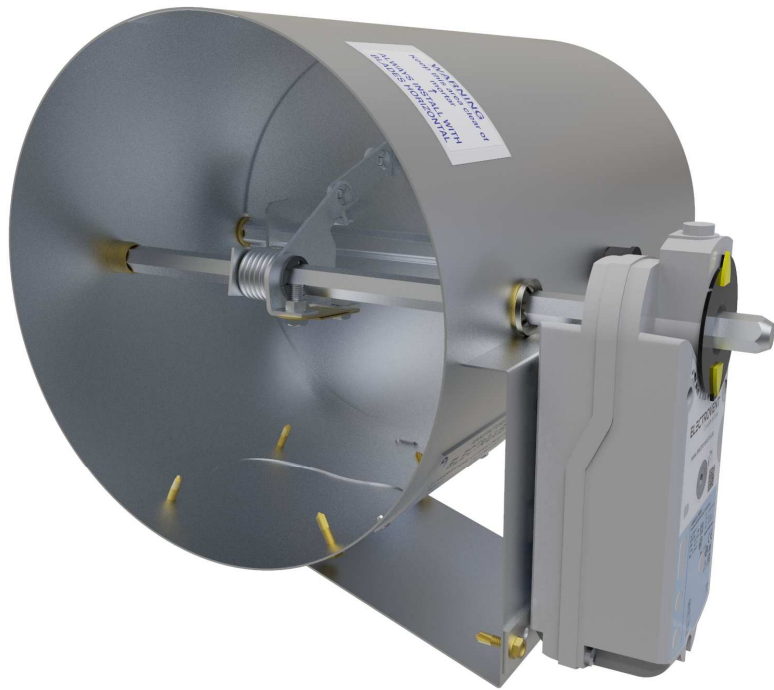
Blade Type Round Fire Damper (2hr Rated) Type EFDR

- Manually or Electrically Operated
- Certified to SANSI 93:2013
- 72°C Fusible Link Failsafe
- Minimum Size Ø100mm
- Maximum Size Ø400mm
- Depth vary from 350mm to 600mm
- Extended Shaft Option
- 30mm Flanges
- Horizontal or Vertical Installation
- Inspection Port for Fusible Link



ELECTROVENT
Consider It Done

Example of Fire Dampers with Actuators Fitted
Type EFD and EFDR



ELECTROVENT
Consider It Done



Square Smoke Damper Type ESD

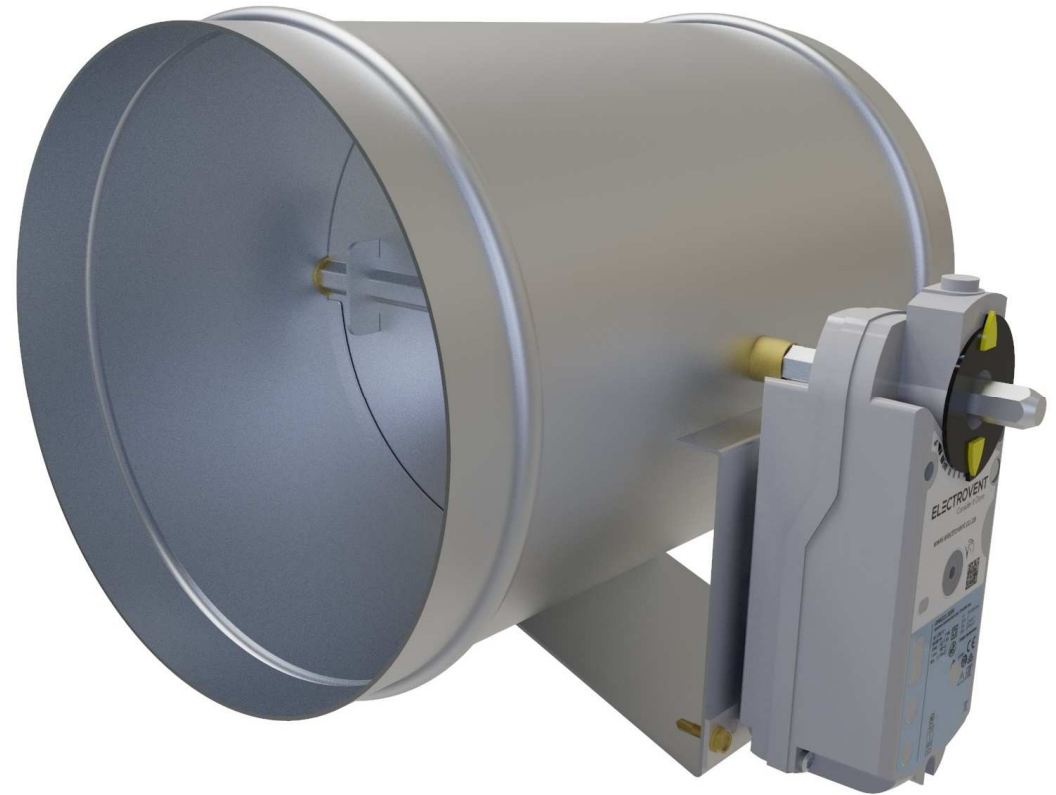
- Electrically Operated Only
- Actuator Normally Open OR Closed
- Side Seals with Parallel Blades
- Minimum Size 200mm x 150mm
- Maximum Size 1500mm x 2400mm
- Standard Depth of 180mm
- Extended Shaft Option
- 30mm Flanges
- Horizontal or Vertical Installation

ELECTROVENT
Consider It Done



Round Smoke Damper Type ESDR

- Electrically Operated Only
- Actuator Normally Open OR Closed
- Side Seals with Parallel Blades
- Minimum Size Ø100mm
- Maximum Size Ø500mm
- Depths vary from 250mm to 600mm
- Extended Shaft Option
- No Flanges
- Horizontal or Vertical Installation



ELECTROVENT
Consider It Done

Square Control Damper Type ECD-GS, ECD-A, ECD and ECD-LL

1. ECD-GS – Flat Galvanised Blade: Single Skin
2. ECD-A – Flat Aluminium Blade: Single Skin
3. ECD – Aerofoil Blade: Double Skin with Tip Seals
4. ECD-LL – Aerofoil Low Leakage: Double Skin with Tip and Side Seals

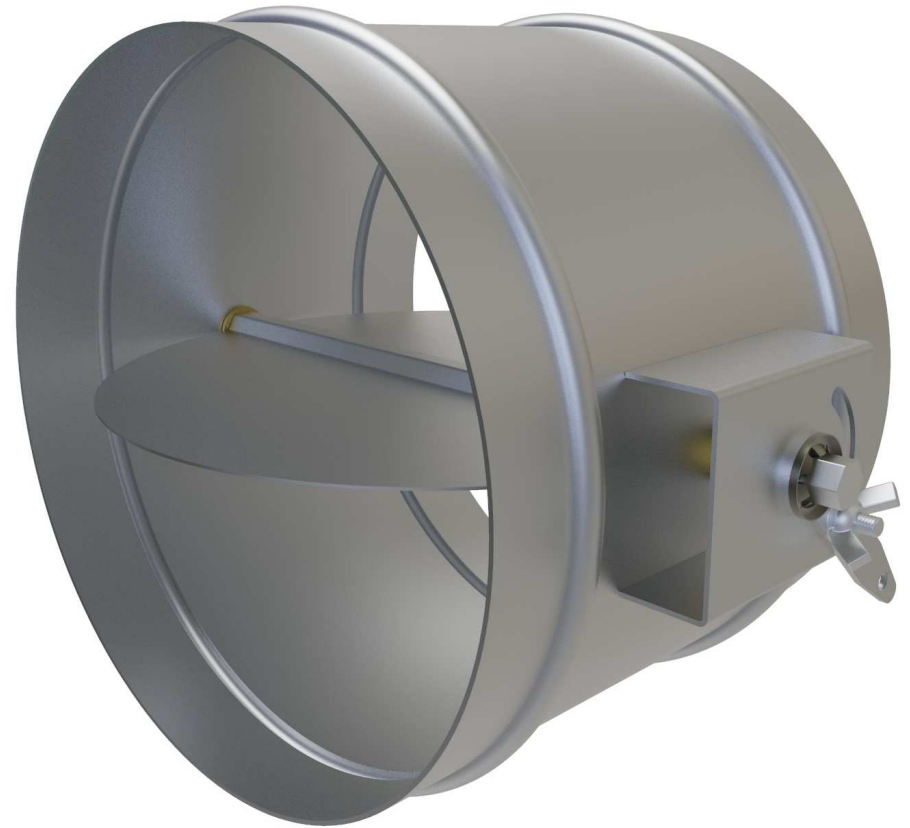
- Mechanically or electrically operated
- Extended shaft
- Nylon gears with a 13mm hex bar shaft
- Blade pitch 150mm



ELECTROVENT
Consider It Done

Round Control Damper Type ECDR

- Manually or Electrically Operated
- Minimum Size Ø100mm
- Maximum Size Ø750mm
- Standard Depth of 200mm
- Extended Shaft Option
- No Flanges
- Horizontal or Vertical Installation



ELECTROVENT
Consider It Done

Example of Control Dampers with Actuators Fitted
Type ECD and ECDR



ELECTROVENT
Consider It Done

Square Non Return Damper Type ENRD

- Gravity Operated with Blade Links
- Galvanized Frame and Blades
- Blade Pitch is 150mm
- Minimum Size 100mm x 150mm
- Maximum Size 1200mm x 2000mm
- Standard Depth of 230mm
- 30mm Flanges
- Horizontal or Vertical Installation



ELECTROVENT
Consider It Done

Round Non Return Damper Type ENRDR

- Spring Loaded
- 1.0mm Galvanized Casing
- Aluminium Blade
- Minimum Size Ø100mm
- Maximum Size Ø250mm
- Standard Depth of 100mm
- No Flanges
- Horizontal or Vertical Installation



ELECTROVENT
Consider It Done

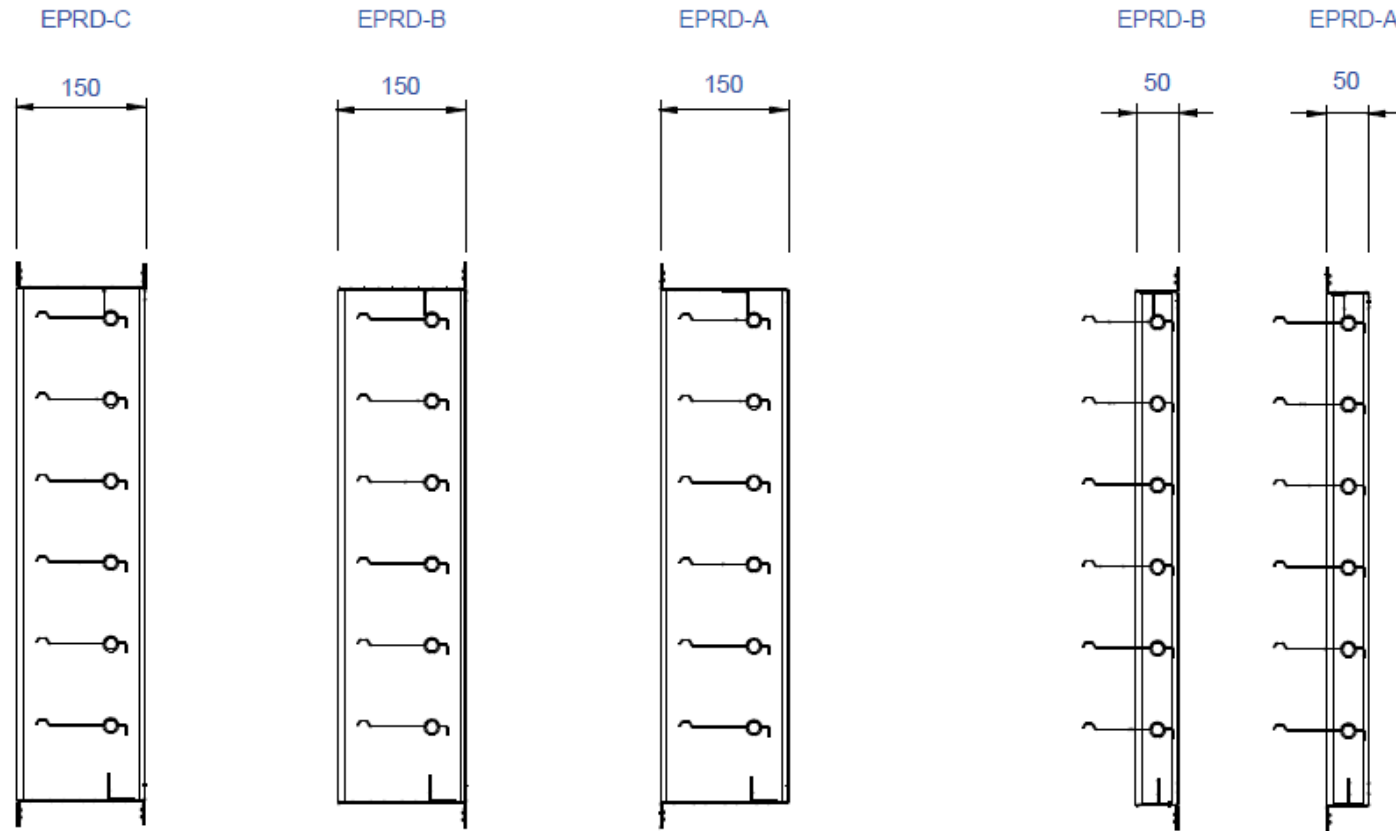
Pressure Relief Damper Type EPRD

- Gravity Operated
- Airflow Direction Dependent
- Minimum Size 200mm x 150mm
- Maximum Size 900mm x 1200mm
- Standard Depth of 50mm or 150mm
- 50mm Blades Protrude
- Galvanized Frame and Aluminium Blades
- 30mm Flanges
- Independent Parallel Blade Movement

ELECTROVENT
Consider It Done



Different Pressure Relief Damper Depths Type EPRD50 and EPRD150



Gas Suppression Damper Type EGSD

- Gravity Operated with Blade Linkages
- Galvanized Curtain Fire Damper
- 72°C Fusible Link
- Blade Pitch is 150mm
- Minimum Size 100mm x 150mm
- Maximum Size 1200mm x 1200mm
- Standard Depth of 460mm
- One Side Ext. Flange One Side Int.
- WL & WMS & 5B Media Option

ELECTROVENT
Consider It Done



Gas Suppression Damper Break Down Type EGSD



ELECTROVENT
Consider It Done

Airtight Access Doors Type EAD

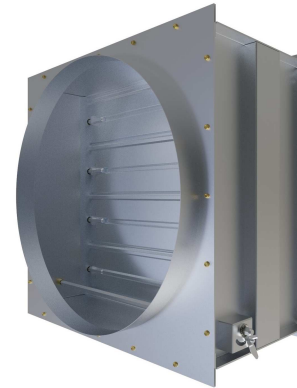
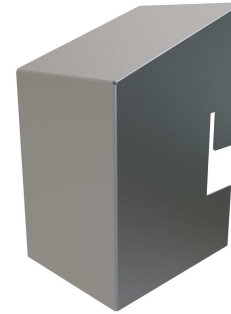
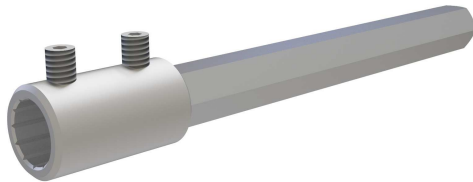
- 50mm x 50mm Galvanized Frame
- Double Lever Cam Handle
- Cylinder Locks (Optional)
- Builders Cleats (Optional)
- Single Door LH or RH
- Double Door c/w Removable Mullion
- Neoprene Seals
- Removable Top Panel Option
- Galvanized Finish

ELECTROVENT
Consider It Done



Accessories

- Actuators: Open/Close, Modulating and Spring Return
- Wire Mesh Screens
- Damper Spigots
- Internal Actuator Pockets
- Actuator Covers
- Extended Shafts
- External Limit Switches



ELECTROVENT
Consider It Done

Proudly Agents in South Africa for

- Blast Dampers
- Fire Rated Pressure Relief Vents
- Pressure Relief Vents
- Marine Dampers

The logo for Apreco features a stylized graphic of three slanted parallel bars in green, blue, and red, followed by the word "Apreco" in a bold, dark blue sans-serif font.The logo for actionair consists of the word "action" in a bold, pink sans-serif font, followed by the word "air" in a bold, blue sans-serif font.The logo for Halton features the word "Halton" in a bold, italicized, light blue sans-serif font.The logo for TEMET consists of the word "TEMET" in a bold, blue, all-caps sans-serif font.The logo for ELECTROVENT features the word "ELECTROVENT" in a bold, blue, all-caps sans-serif font, with a stylized "E" made of three horizontal bars. Below it, the tagline "Consider It Done" is written in a smaller, grey sans-serif font.

ELECTROVENT
Consider It Done