

SECTION 7.3 ACTUATORS TYPE NACA1/2-20



ELECTROVENT



APPLICATION

- ELECTROVENT damper actuators are designed specifically for the HVAC market
- For dampers size $\pm 4\text{m}^2$
- Torque 20 Nm
- Nominal Voltage AC/DC 24V and AC 230V
- Universal Adapter $\varnothing 10...16\text{mm}$ / $11...14\text{mm}$ square
- Manual Over-ride Push button when required.
- Selectable direction of rotation CW/CCW
- 2 Adjustable SDPT Auxiliary switch when requested
- Actuator available with 1m Cable connection

MODEL SELECTION TABLE

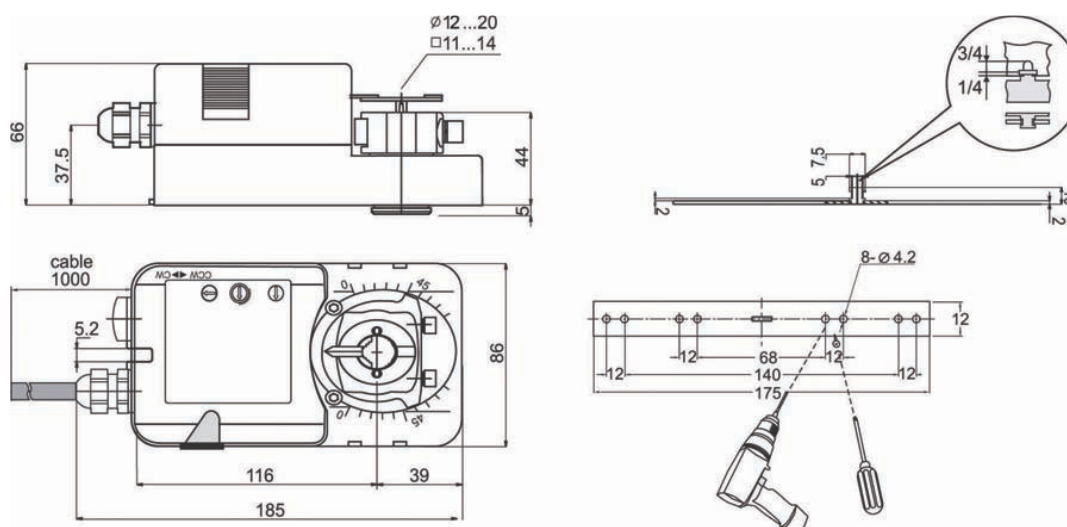
TOURQUE	RUNNING TIME	POWER TIME	AUXILIARY SWITCHES	MODEL / TYPE
20 Nm	70...120 sec	AC/DC 24V	No	NACA 1-20
			2 x SPDT	NACA 1-20S
20 Nm	70...120 sec	AC 230V $\pm 10\%$	No	NACA 2-20
			2 x SPDT	NACA 2-20S

The performance specification above are nominal and subject to tolerances and application variables of generally acceptable industry standards. ELECTROVENT shall not be liable for damages resulting from misapplication or misuse of its products.

TECHNICAL SPECIFICATION TABLE

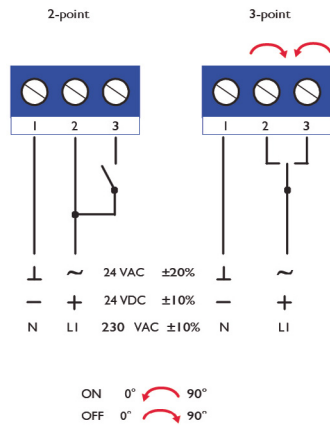
	NACA1...20 (S)	NACA2...20 (S)
Torque	20 Nm	20 Nm
Damper Size	4.0 m ²	4.0 m ²
Power Supply	AC/DC 24V	AC 230V
Frequency	50 - 60 Hz	50 - 60 Hz
Power Consumption		
• Operating	8.0W	8.0W
• At the end stops	2.0W	4.0W
For wire sizing	8.0VA	8.0VA
Auxiliary switch rating	3(1.5) A/230V (for 24V and 230V)	3(1.5) A/230V (for 24V and 230V)
Protection class	II (for 24V and 230V)	II (for 24V and 230V)
Control Signals	2 point and 3 point	2 point and 3 point
Angle of Rotation	90° (95° mechanical)	90° (95° mechanical)
Angle Limiting	5°...85° in 5° step	5°...85° in 5° step
Weight approx.	1.2 Kg	1.2 Kg
Life Cycle	60,000 rotation	60,000 rotation
Sound Level	Below 45 dB	Below 45 dB
IP Protection	IP54	IP54
Ambient Temperature	-20°...50° as per IEC 721-3-3	-20°...50° as per IEC 721-3-3
Inventory Temperature	+70° as per 721-3-2	+70° as per 721-3-2
Ambient Humidity	5...95% RH	5...95% RH
Maintenance	Maintenance free	Maintenance free
Certification	CE and ISO 9000 EN / EEC... Requirements	CE and ISO 9000 EN / EEC ... Requirements

ACTUATOR DIMENSIONS (MM)

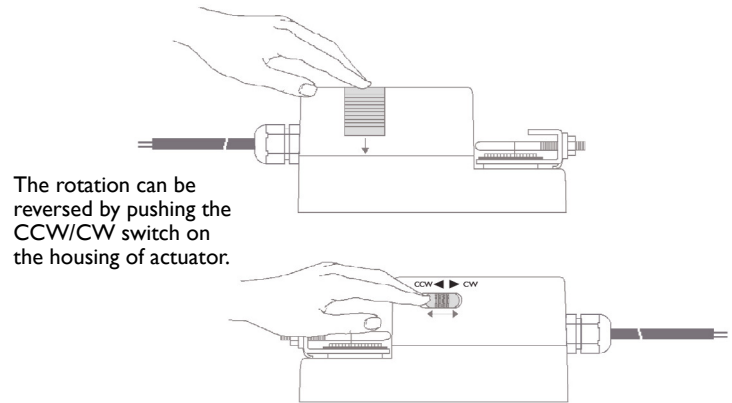


WIRING DIAGRAM

Wiring diagram



Changing direction of rotation

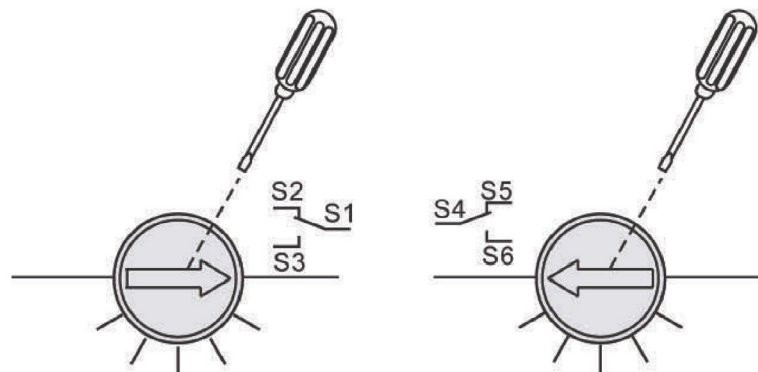
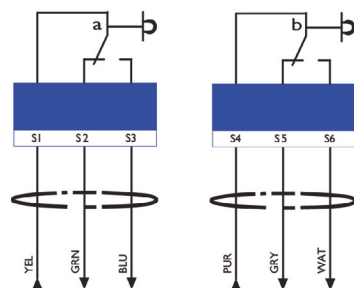


The rotation can be reversed by pushing the CCW/CW switch on the housing of actuator.

24 VAC/DC: Connect via safety isolating transformer.
230 VAC: To isolate from the main power supply, the system must incorporate a device which disconnects the phase conductors (with at least a 3 mm contact gap).

AUXILIARY DIAGRAM

Auxiliary switches



ANGLE ROTATION LIMITING DIAGRAM

Angle of Rotation Limiting

