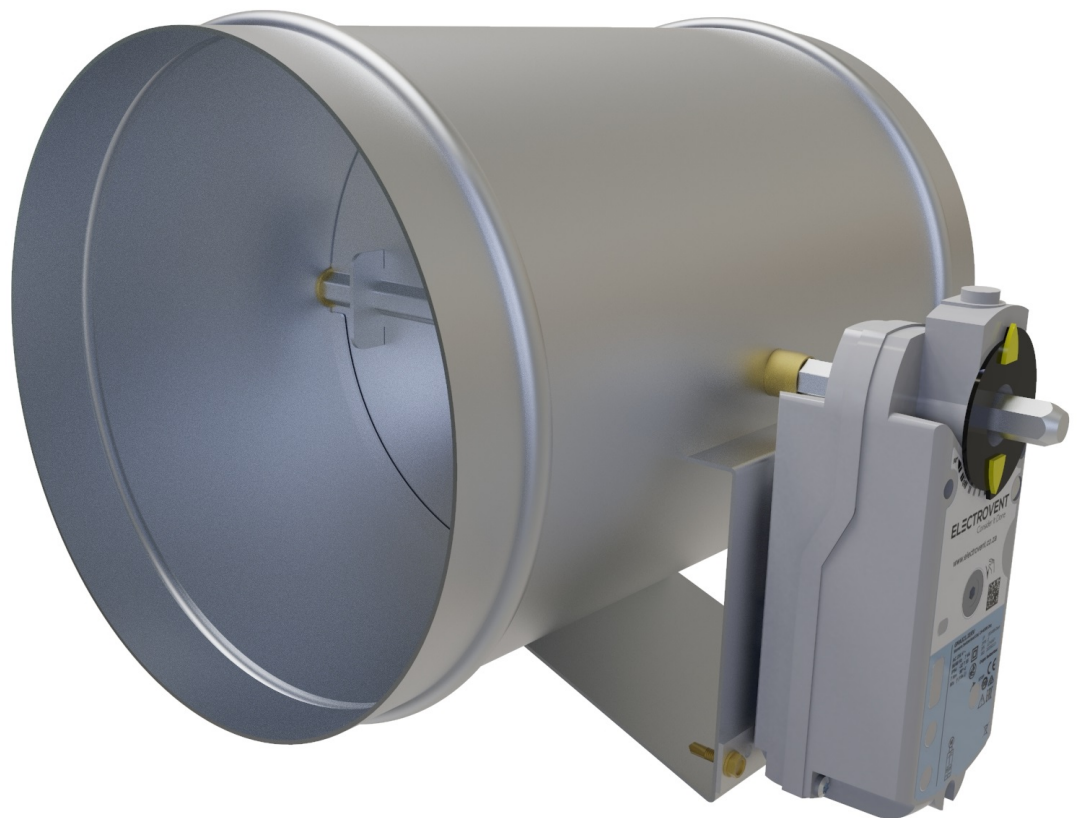


ROUND SMOKE DAMPER  
TYPE ESDR



**ELECTROVENT**  
Consider It Done



### APPLICATION

Electrovent ESDR Smoke Dampers are smoke protection products used in HVAC installations to contain or extract smoke inside ductwork and buildings.



### MATERIALS AND STRUCTURE

The ESD frame and blades are manufactured from galvanised steel as standard. Blades are installed in the casing with low friction brass bushes.

Blade position is indicated from outside of the casing, and each round smoke damper is typically fitted with a spring return actuator to client specifications.



### OPTIONS

The ESDR is fitted with an electrical spring return actuator in 24V or 220V as standard for fail safe operation.

Various other actuator options are available.

The ESDR can be set to spring open or spring closed to respectively exhaust or contain smoke under emergency conditions.

The option for extended shaft is available for fitment of your choice of actuator.

The ESDR is suitable for vertical and horizontal installation in walls and slabs.

Available in 304 and 316 stainless steel on request.



### STANDARD DIMENSIONS

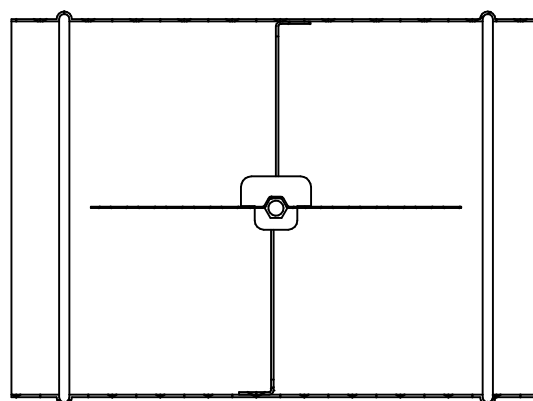
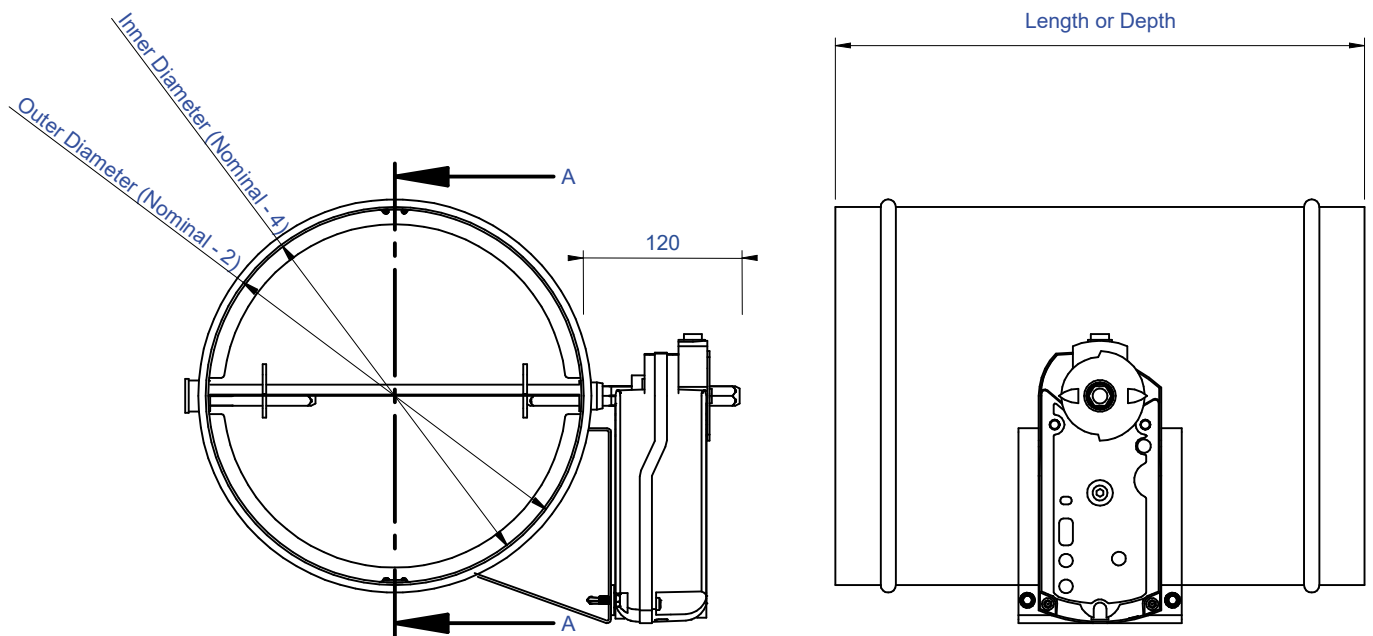
Minimum Size Ø100mm

Maximum size Ø500mm

Casing depth is 350mm as standard.

ESDR has no flange.

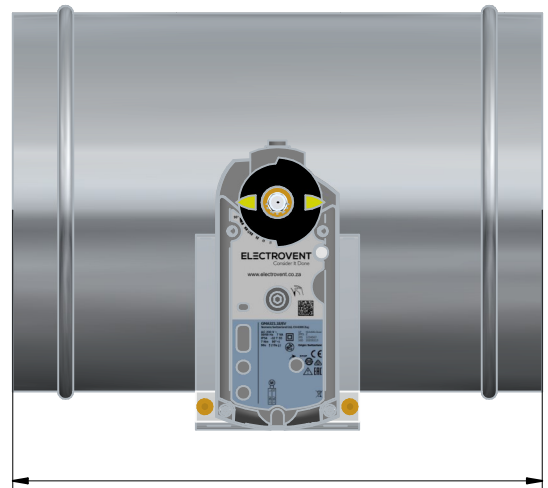
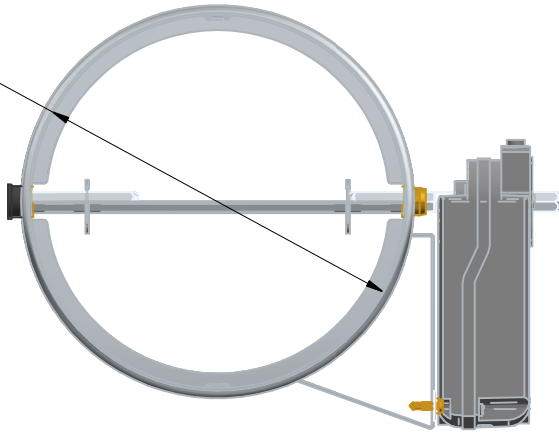
ESDR DIAGRAM



SECTION A-A

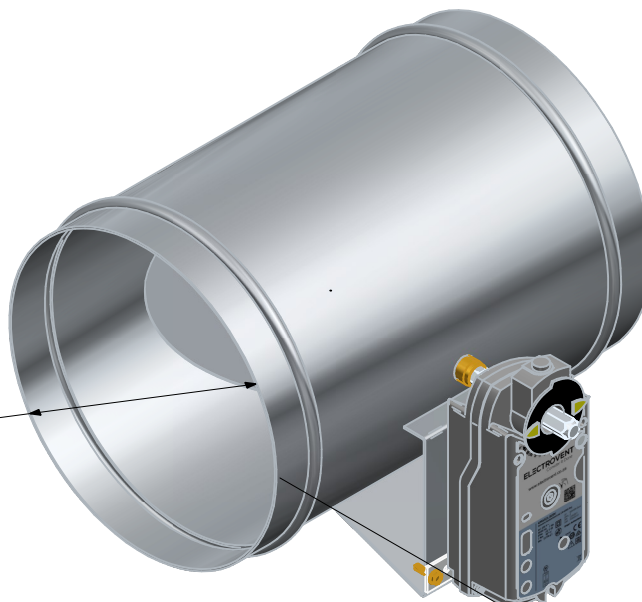
ESDR SIZE SPECIFICATION - Ø x L (ALWAYS SPECIFIED DIAMETER x LENGTH or DEPTH)

Diameter



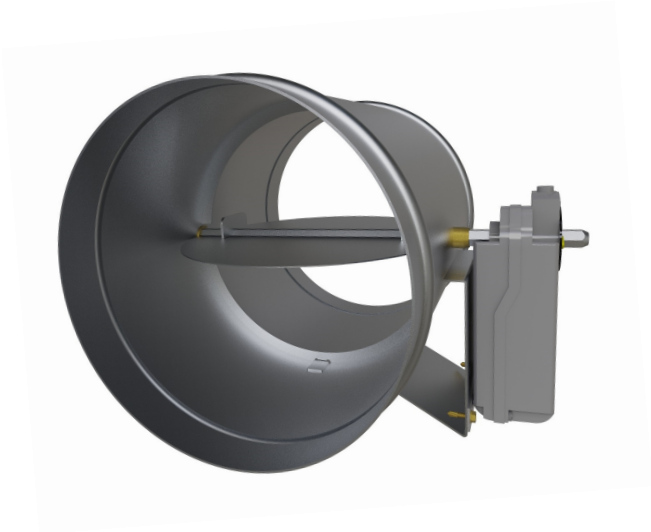
Length or Depth

Diameter



Length or Depth

ESDR POWER ON / NORMALLY OPEN WITH POWER OFF / SPRING RETURN TO CLOSE



ESDR POWER ON / NORMALLY CLOSED WITH POWER OFF / SPRING RETURN TO OPEN



ORDERING CODE

How to generate an order code: Provide the type, model and item code as well as specific size requirements and quantity as per example: ESDR-24V / Ø300 X 350mm (Specify spring return action of actuator)

Type	Item Code		Diam	x	Length		
ESDR	- ES	Extended Shaft for own Actuator installation	Max 500mm		Std 350mm		
	- 24V	24V Spring Return Actuator (Power to open / Spring to close OR Power to close / Spring to open)					
	- 220V	220V Spring Return Actuator (Power to open / Spring to close OR Power to close / Spring to open)					